



The Potomac

4 Bedroom | 3.5 Baths | 3382 sq.ft.



Elev. 3: Showing Optional Stone



Elev. 1: Showing Optional Stone



The Potomac

4 Bedroom | 3.5 Baths | 3382 sq.ft.



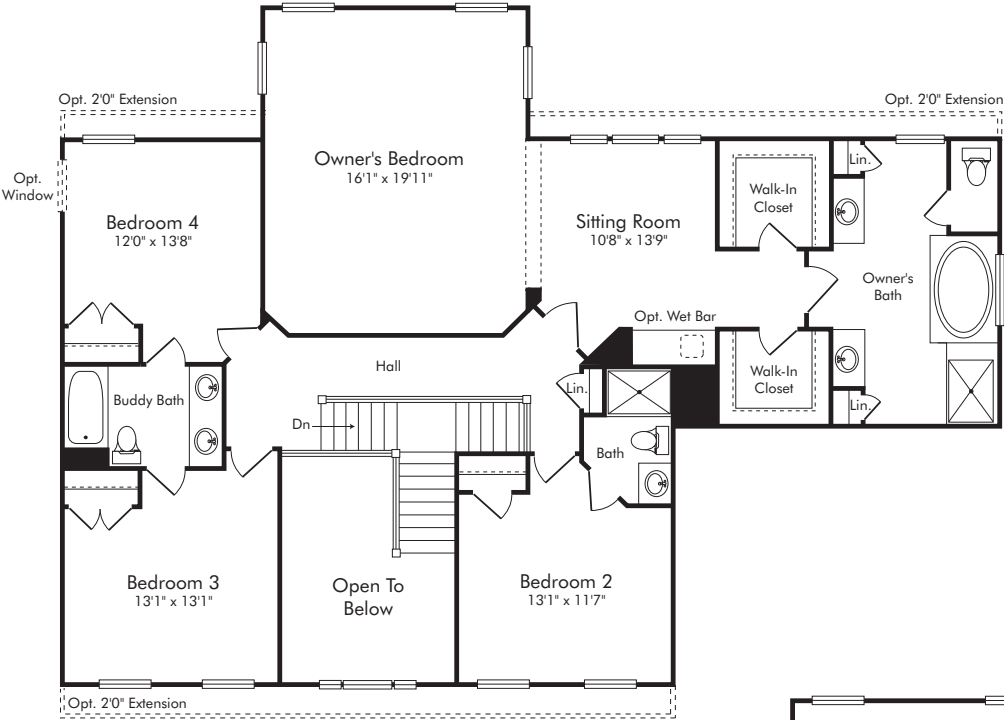
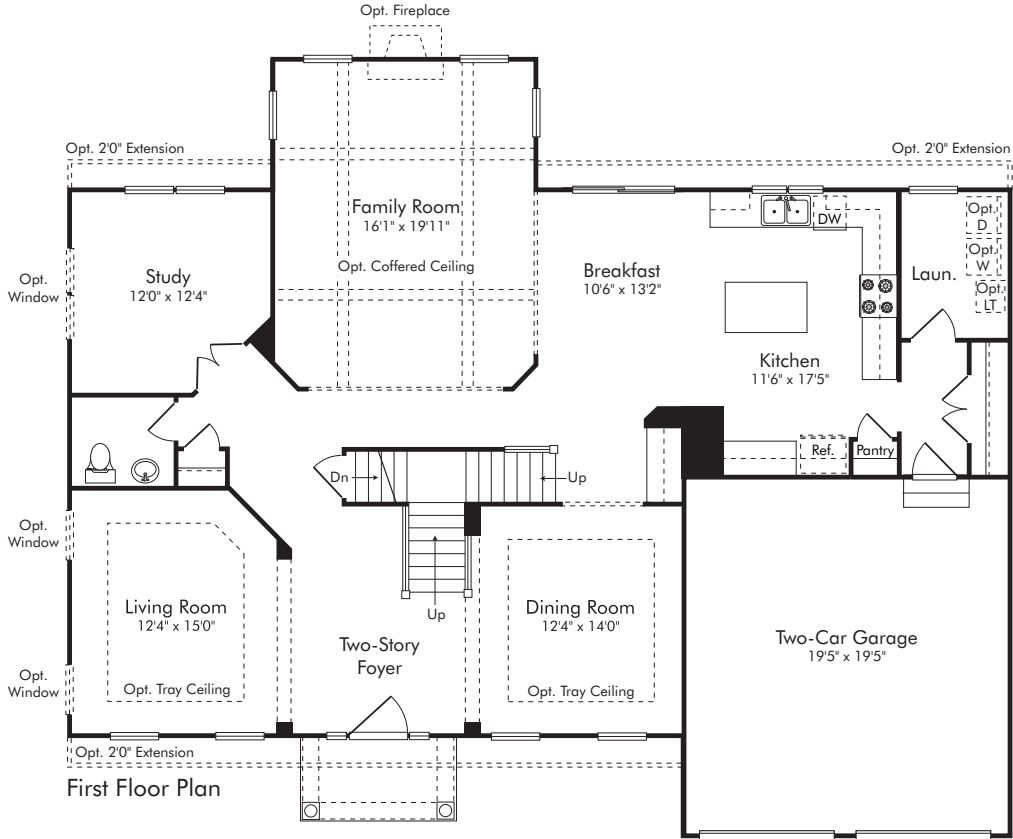
Elev. 4: Showing Optional Stone



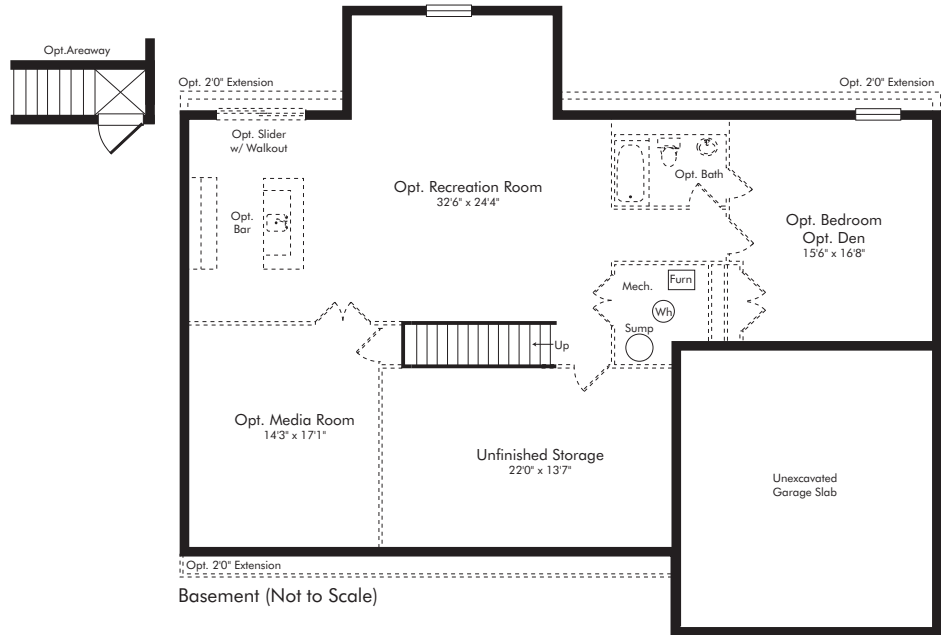
Elev. 2: Showing Optional Stone

The Potomac

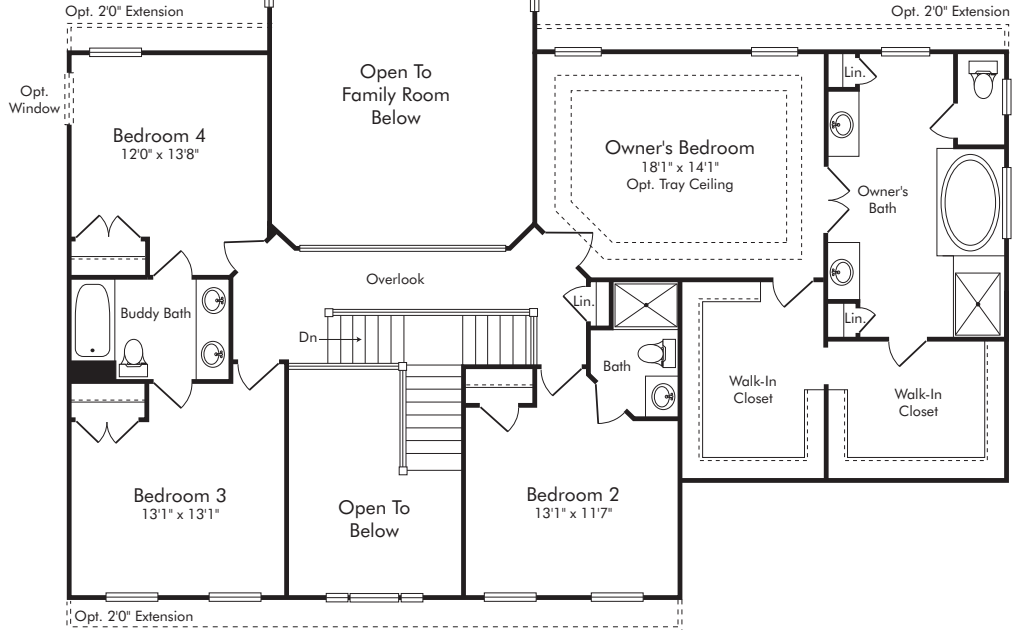
4 Bedroom, 3.5 Baths, 3382 sq.ft.



Second Floor Plan



Basement (Not to Scale)



Alt. Second Floor Plan



www.BurkardHomes.com

Renderings and floor plans are an artist's conception and may vary in detail from plans and specifications. Square footage is approximate. Some items shown are optional and may be indicated by dotted lines. Builder reserves the right to initiate changes without prior notice. For additional information, please contact sales agent, or Burkard Homes. All rights reserved. ©Burkard Homes 2016. (01-16)

MHBR # 6300

